



Wisconsin Emergency Management

WEM 101
July 30, 2015

David Marcum
Procurement Specialist
608-242-3639
david.marcum@wisconsin.gov

Federal Government



**DHS/
FEMA**

State of Wisconsin



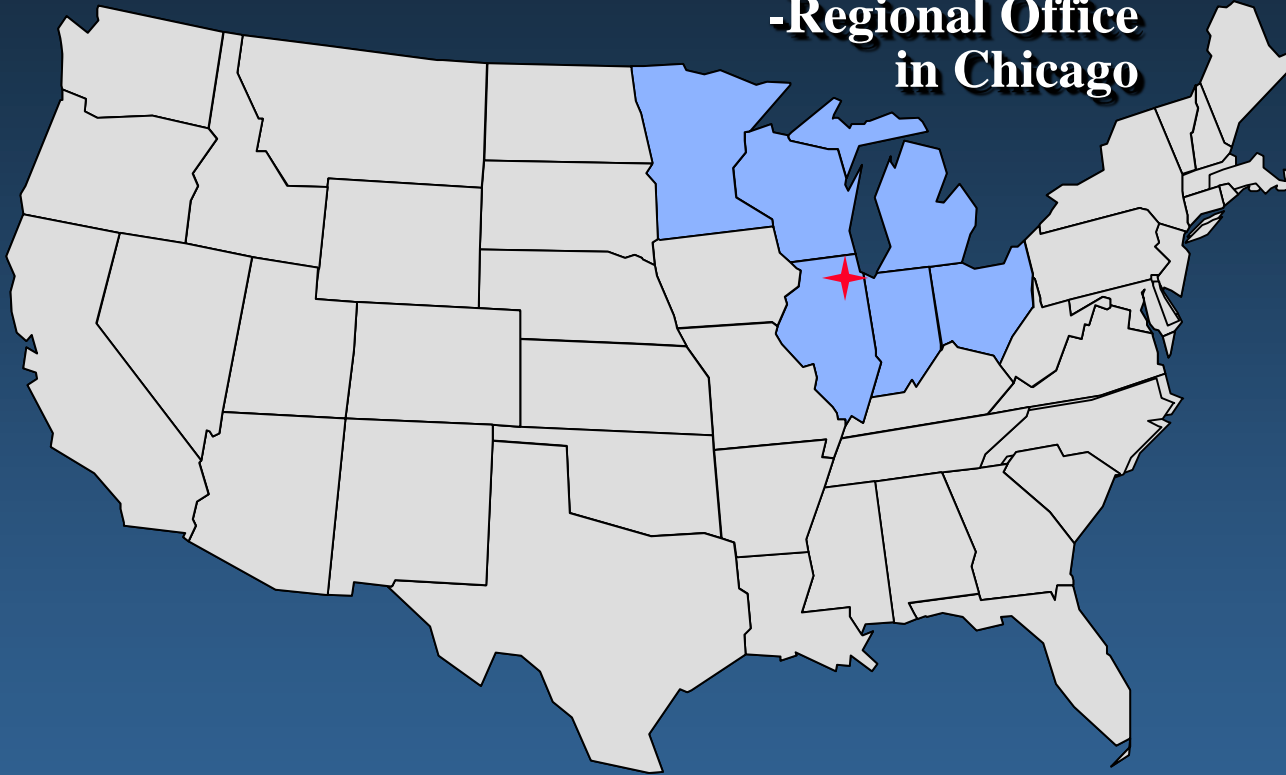
**DMA/
WEM**

Local Government

**County Emergency
Management**

FEMA Region V

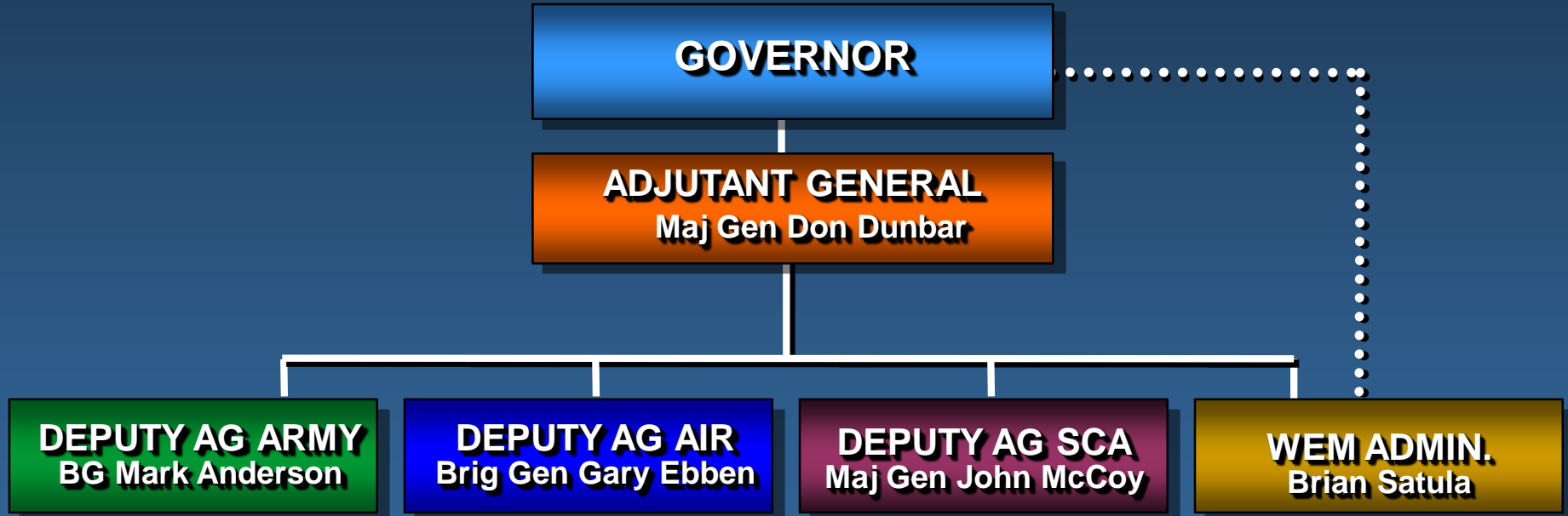
**-Regional Office
in Chicago**





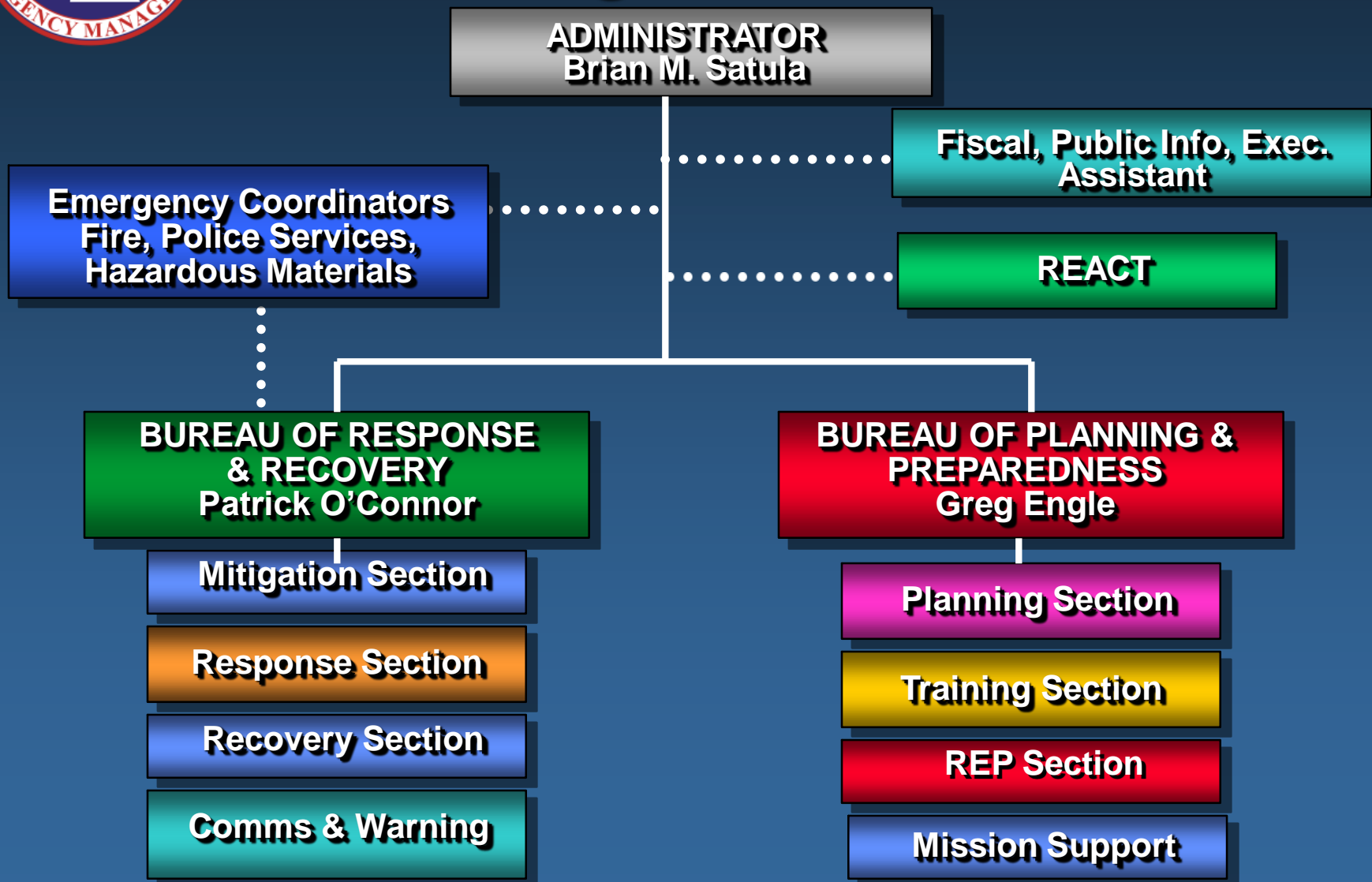
Department of Military Affairs

Organization





Wisconsin Emergency Management Organization



Bureau of Planning & Preparedness

Emergency Planning

Emergency Preparedness and Community
Right to Know Act (EPCRA)

Radiological Emergency Preparedness
(REP)

Training & Exercising

Mission Support



REACT Center

- Regional Emergency All-Climate Training Center (REACT) located at Volk Field (Camp Douglas, WI)
- 15 acre training site that provides classroom and hands-on training
- Training includes confined space rescue and structural collapse



A photograph of a flooded street in an urban area. The water is murky and reflects the buildings and utility poles. In the foreground, a sidewalk is visible, and a large pile of sandbags is stacked against a brick building on the right. The background shows more buildings and utility poles under a grey sky.

Bureau of Response & Recovery

Disaster Response & Recovery

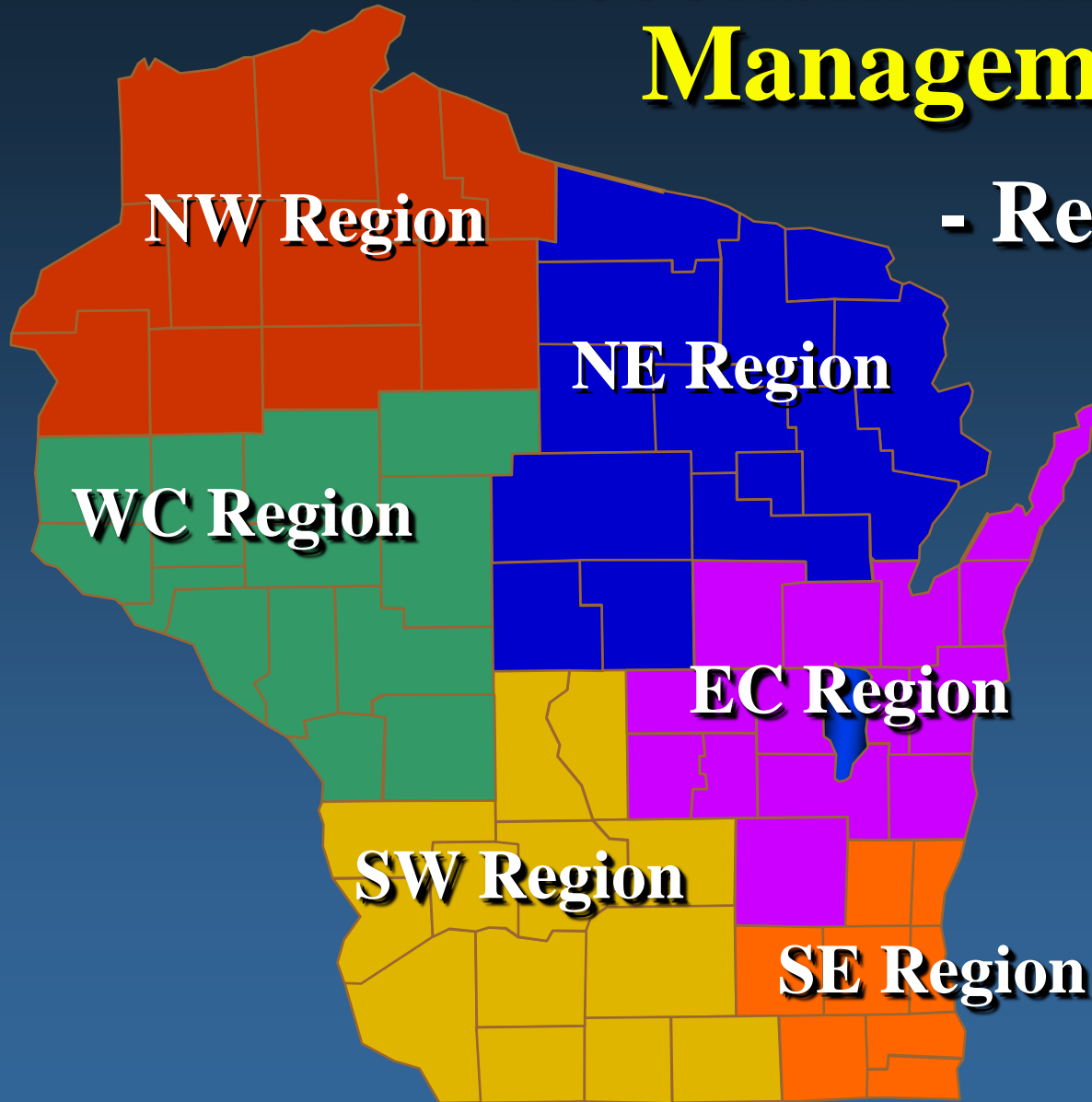
Emergency Police Services

Emergency Fire Services

Hazard Mitigation Program

Communications & Warning

Wisconsin Emergency Management



- Regional Offices

- Spooner
- Waukesha
- Wausau
- Madison
- Eau Claire
- Fond du Lac

WEM Duty Officer

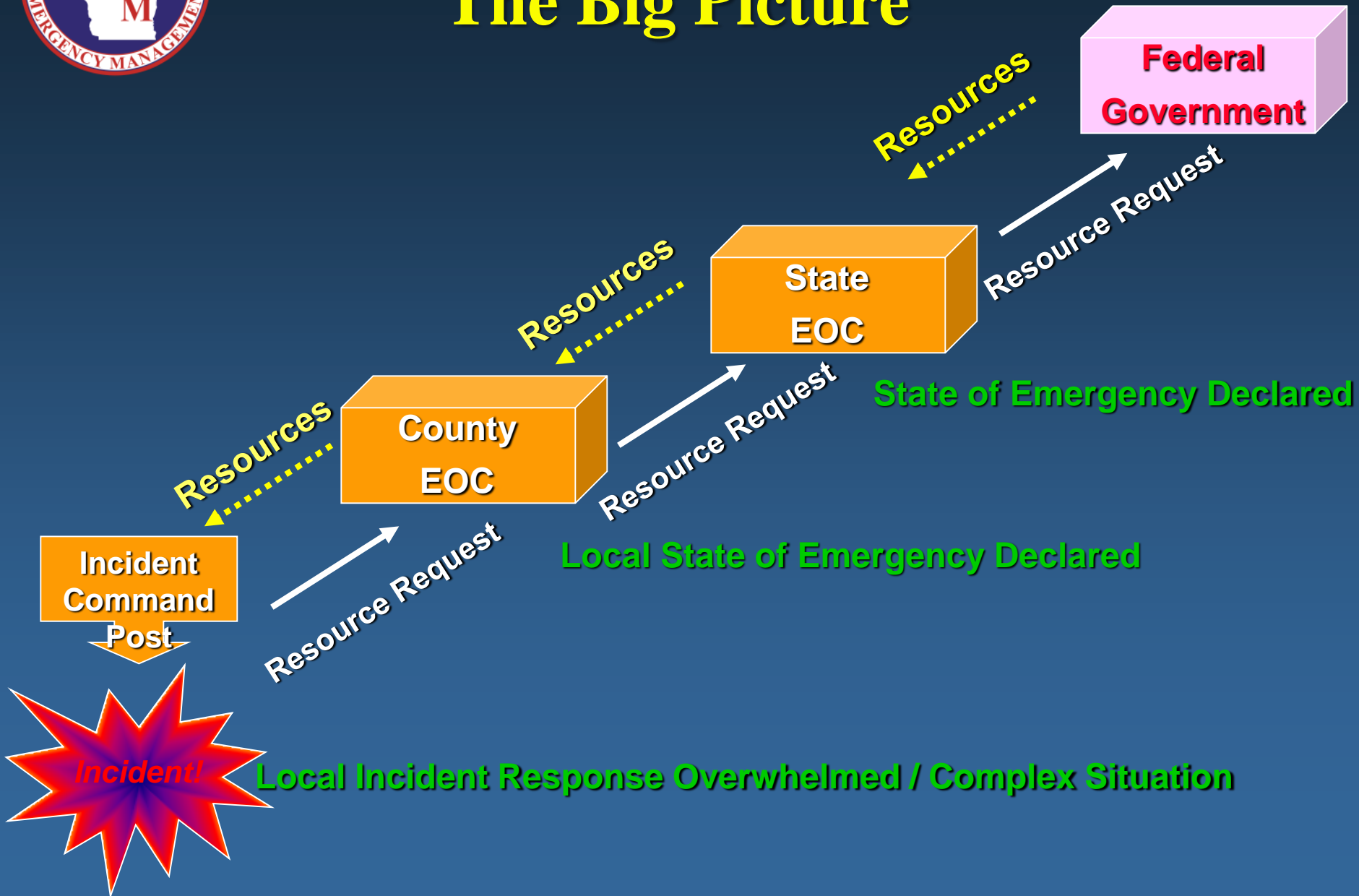
24-Hour Emergency Hotline



1-800-943-0003



The Response The Big Picture



What to do When Disaster Strikes



- Incident or Event Occurs
- County Emergency Management Director Assesses Damage
- Local Governments Declare a State of Emergency & Request Assistance

State Disaster Assistance

- Governor Declares a State of Emergency
- WEM becomes Lead State Agency and Coordinates State Resources



Request for Federal Assistance

- FEMA, SBA, WEM and Local Officials Conduct a Preliminary Damage Assessment (PDA)
- Governor Requests Federal Disaster Assistance Through FEMA
- Assistance is Approved or Denied
- Wisconsin Disaster Fund (WDF)





State Emergency Operations Center (SEOC)

- Common Operating Picture
- Resource Coordination
- Policy and Strategy
- Public Information
- Legal and Financial Support
- Communications





How Do Vendors Get Involved?

Get Registered in VendorNet.

<http://vendornet.state.wi.us>



Questions?

Thank You!